

### WORKFLOW SOLUTION:

*Matching a Printed Image to a Scanned Original using Adobe Photoshop 6.0 and ICC profiles.*

*This workflow describes using Photoshop 6.0 to match a printed image to a scanned original by applying a scanner and a printer profile.*

page 1 of 3

### REQUIREMENTS:

- Adobe Photoshop 6.0
- ICC profiles for your devices
- Photoshop Acquire or Twain module for your scanner

### PLATFORM:

Power Macintosh  
Windows 98/NT/2000

### RELATED PDFs:

*For Macintosh Users:  
Configuring ColorSync Control Panel Settings*

*For Windows Users:  
Loading Monitor Profiles Using Adobe Gamma*

### LAST UPDATED:

May 1, 2002

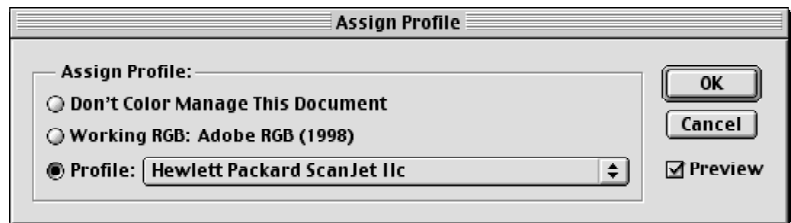


www.monacosys.com

## Photoshop 6.0 Color Management Workflow

This workflow uses Photoshop 6.0 to match a printed image to an original image by applying an input and a printer profile. This workflow assumes the procedures in *RELATED PDFs* (see sidebar) have been completed

- 1 Configure the Color Settings dialog box.
  - a. Select **Edit>Color Settings**.
  - b. Click the **Advanced** checkbox.
  - c. Select **Adobe RGB (1998)** from the Working Spaces **RGB:** pop-up list.
  - d. If you are printing to a PostScript printer, select your printer profile from the Working Spaces **CMYK:** pop-up list. If you are not printing to a PostScript printer, changing the default is unnecessary.
  - e. Select **Preserve Embedded Profiles** from all pop-up lists under **Color Management Policies**.
  - f. Select **Perceptual** from the **Intent:** pop-up list under **Conversion Options**.
  - g. Uncheck the **Black Point Compensation** and **Use Dither** options.
  - h. Keep the **Preview** checkbox enabled and click **OK**.
- 2 Import the image.
  - a. Select **File>Import>** your **scanner plug-in**.
  - b. Scan an image using the Acquire or Twain module for your scanner.  
Use the same scanner settings previously used to profile your scanner. You may change the resolution settings, but all other settings must be duplicated exactly, or your scanner profile will render color inaccurately.
- 3 Name and save your scanned image. We recommend that you work from a copy of the saved scan. This provides you with an original of the image in your RGB working space. This may be useful should you desire to repurpose the image.
- 4 Assign your input profile.
  - a. Select **Image>Mode>Assign Profile**.



- b. If your image is from a scanner, select the **Profile:** radio button, then select your **Scanner Profile** from the **Profile:** pop-up list.  
If you are not working with a profiled input device, select the **Working RGB: Adobe RGB (1998)** radio button.
- d. If you toggle the **Preview** checkbox on and off, you can view the effect of your scanner profile on the image. Keep the checkbox enabled.

(continued)

### WORKFLOW SOLUTION:

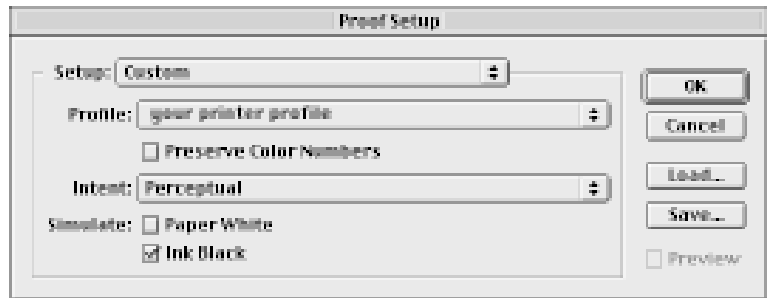
*Matching a Printed Image to a Scanned Original using Adobe Photoshop 6.0 and ICC profiles.*

*This workflow describes using Photoshop 6.0 to match a printed image to a scanned original by applying a scanner and a printer profile.*

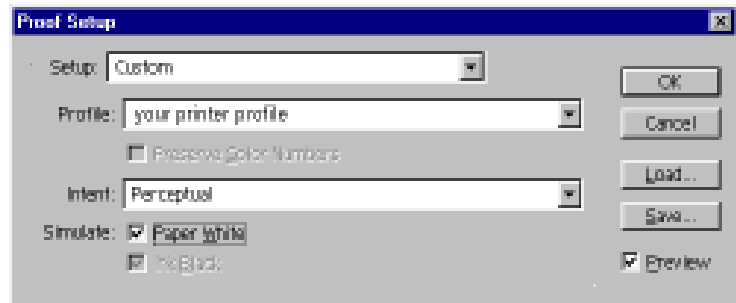
page 2 of 3

### 6.0 Color Management Workflow *(continued)*

- e. Click **OK**.  
When you *Assign* an input profile to an image, Photoshop uses the profile to interpret the scanned image data. Color values are not altered.  
Your displayed image should closely match your original image.
- 5 Enable soft-proofing.
  - a. Select **View>Proof Setup>Custom**.



▲ Macintosh *Proof Setup* dialog box configuration



▲ Windows *Proof Setup* dialog box configuration

- b. Select your **printer profile** from the **Profile:** pop-up list.
- c. If you toggle the **Preview** checkbox on and off, you can view the effect of your printer profile on the image. Keep the checkbox enabled.
- d. Macintosh: Check the **Ink Black** checkbox. Leave other checkboxes unchecked, and click **OK**.  
Windows: Check the **Paper White** checkbox. Leave other checkboxes unchecked, and click **OK**.  
The **View>Proof Colors** option should now appear checked, indicating your monitor is displaying a soft proof of your image as it will print.
- 6 You can now edit your image.
- 7 When editing is complete, select **Image>Mode>Convert to Profile**.



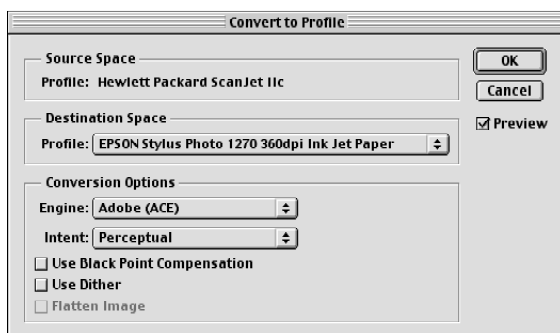
### WORKFLOW SOLUTION:

*Matching a Printed Image to a Scanned Original using Adobe Photoshop 6.0 and ICC profiles.*

*This workflow describes using Photoshop 6.0 to match a printed image to a scanned original by applying a scanner and a printer profile.*

page 3 of 3

### 6.0 Color Management Workflow (continued)



- a. Select **your printer profile** from the **Profile:** pop-up list.
  - b. Select **Adobe (ACE)** from the **Engine:** list.
  - c. In the **Intent:** pop-up list select the rendering intent appropriate to your image. If you are printing a photographic image, select **Perceptual**.
  - d. Uncheck both the **Black Point Compensation** and **Use Dither** options.
  - e. Select **OK**.  
Photoshop converts the image data to the color space of the printer.
- 8 Print the image.
    - a. Configure your system to use your printer as your default printer.
    - b. Select **File>Print Options**.
    - c. Select **Show More Options**, and then **Color Management** from the pop-up list.
    - d. Keep the **Document:** radio button enabled. Your printer profile name should be displayed.
    - e. Select **Same As Source** from the **Print Space>Profile:** pop-up list.
    - f. Select **Page Setup**.
    - g. Select the same media (paper), resolution, and settings originally used to create your printer profile. Disable any color management options in your print driver and select **OK** in all dialog boxes.
  - 9 Select **File>Print**, and click **OK**.

If you choose to save your work, we recommend you rename it. This will provide you with an edited copy of your image in the color space of your printer as well as the previous copy that you saved in your working color space.

NOTE: Photoshop contains three printing dialog boxes—Print Options, Page Setup, and Print. Many of the above options are present in more than one of the dialogs depending on your printer. With many printers, you may be able to select all of the necessary options using the Print dialog box alone.

